

# IMO Slew Drives

## Bolt. Connect. Slew. Done



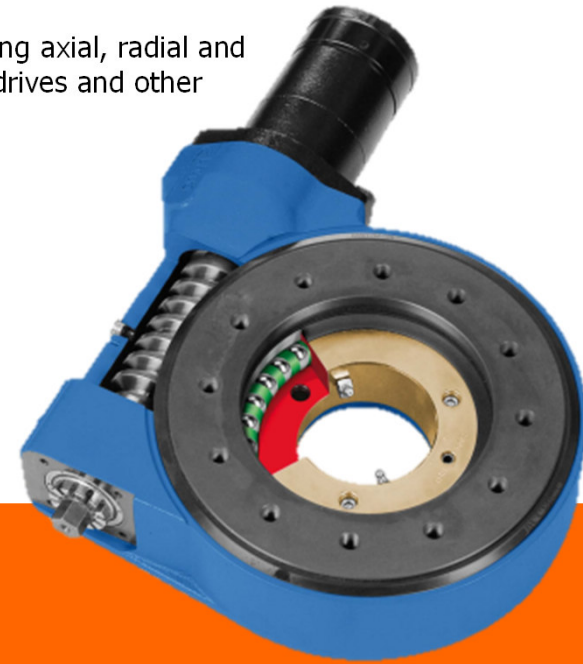
An IMO slew drive is a ready-to-install unit consisting of a ball or roller slewing ring for handling simultaneously occurring axial, radial and tilting moments. A completely enclosed housing protects slew drive and users. Specially designed hydraulic or electric drives and other attachments can be ordered directly from IMO.

### A completely closed unit

- one unit - no individual parts
- perfectly matched components
- fast assembly
- protective housing

### Added values

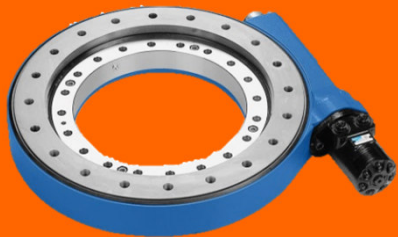
- jerk-free movement - no stick / slip effect
- unlimited slewing range
- maximum safety, since fully enclosed
- cost effective and proven
- compact, space saving, heavy duty



## Series Overview

### Worm Driven (WD)

- high torque
- high power transfer
- number of revolutions 1-3 rpm



WD-L



WD-H

### Spur-Driven (SP)

- higher number of revolutions
- high number of duty cycles
- continuous rotation possible



SP-I



SP-H

# Catalogue types – on stock

These slewing rings are available at short notice. – Subject to prior sale.



Slew Drives									Possible components		
Series	Raceway Diameter	Drawing Number	Design	Mounting Hole	max. Torque [Nm]	Load carrying capacity static radial [N]	Load carrying capacity static axial [N]	Catalogue Page <sup>1)</sup>	Hydraulic Motor	Permanent Brake	Spring Applied Multi-Disc Brake
WD-L	156	WD-L 0156/3-07871	1-row / 1 drive	thread hole (blind hole)	3280	94000	253000	74	✓	✓	✓
WD-L	223	WD-L 0223/3-04698	1-row / 1 drive	thread hole (blind hole)	9303	204000	547000	75	✓	✓	✓
WD-L	223	WD-L 0223/3-10100	1-row / 2 drives	thread hole (blind hole)	18606	204000	547000	76	✓		✓
WD-L	223	WD-L 0223/3-04895	2-rows / 1 drive	thread hole (blind hole)	9303	367000	984000	77	✓	✓	✓
WD-L	343	WD-L 0343/3-04557	1-row / 1 drive	thread hole (blind hole)	12905	338000	905000	80	✓	✓	✓
WD-L	343	WD-L 0343/3-10101	1-row / 2 drives	thread hole (blind hole)	25810	338000	905000	81	✓		✓
WD-L	343	WD-L 0343/3-12000	2-rows / 1 drive	thread hole (blind hole)	12905	564000	1511000	82	✓	✓	✓
WD-L	419	WD-L 0419/3-04553	1-row / 1 drive	thread hole (blind hole)	15606	413000	1107000	84	✓	✓	✓
WD-L	419	WD-L 0419/3-04684	2-rows / 1 drive	thread hole (blind hole)	15606	691000	1849000	86	✓	✓	✓
WD-L	478 <sup>2)</sup>	WD-L 0478/3-04904	1-row / 1 drive	thread hole (blind hole)	24288	675000	1808000	88	✓		✓
WD-L	478 <sup>2)</sup>	WD-L 0478/3-04995	1-row / 1 drive	through hole	24288	675000	1808000	88	✓		✓
WD-L	625 <sup>2)</sup>	WD-L 0625/3-06290	1-row / 1 drive	thread hole (blind hole)	42824	883000	2364000	92	✓		✓

1) Please find our catalog in the download section of [www.imo.de](http://www.imo.de). If you would like to receive a pdf or a paper copy please contact us: [catalog@imo.de](mailto:catalog@imo.de)

2) In case of non-vertical output axis (e.g. horizontal output axis), a different slew drive type is needed to ensure jerk-free movement. Please contact us: [sales@imo.de](mailto:sales@imo.de)

## Our services:

### IMO Engineering

- raceway and bolt calculations
- finite element calculations
- custom solutions to unique requirements
- technical support and engineering knowledge

### IMO Service

- quick help in case of damages
- installation support
- assessment of built-in slew drives
- lubricant analysis, spare parts service etc.

